A top-down view of a wooden desk. In the upper left, a white cup of black coffee sits on a matching saucer. To its right is a silver laptop, partially open. Below the coffee cup are a pair of black-rimmed glasses. To the right of the glasses is a tablet with a dark screen. In the lower left, there are several books, one of which has 'SOUL' visible on its cover. In the center, there are some small, square photographs or cards. The text 'Education and Career Guidance' is overlaid in the center in a large, black, serif font, with 'shared by Ms Sharon Tay' in a smaller, black, serif font below it. The text is set against a light blue rectangular background.

# Education and Career Guidance

shared by Ms Sharon Tay

# Objectives

- © Updates on Education
- © Post secondary pathways
- © How to advise our child on their ECG decision-making

A background image of a desk with a pen holder, a small potted plant, a notebook, and a tape dispenser. A light blue vertical bar is positioned above the quote mark.

“

University is neither the pinnacle nor end of learning. If we were to attend one, University is but one part of our lifelong pursuit of learning, wisdom, and contributions. What matters more than the grades that we obtain in university, is the foundation we will establish **to learn for life, and to learn throughout life.**- Min Chan Chun Sing, Minister for Education.

“

## Updates on Education

# EDUCATION LANDSCAPE HAS CHANGED

Revised  
PSLE scoring system

Expanding Common  
Entry Programme  
offerings by Polytechnics

Expanding  
Aptitude-Based  
Admissions at  
Autonomous Universities

Full Subject Based  
Banding

Streamlining of ITE  
curriculum to attain a  
Higher Nitec within a  
shorter time

Inter-disciplinary  
learning in Institutes of  
Higher Learning

(New) Expanding Direct School  
Admission-Junior College (DSA-  
JC) Opportunities

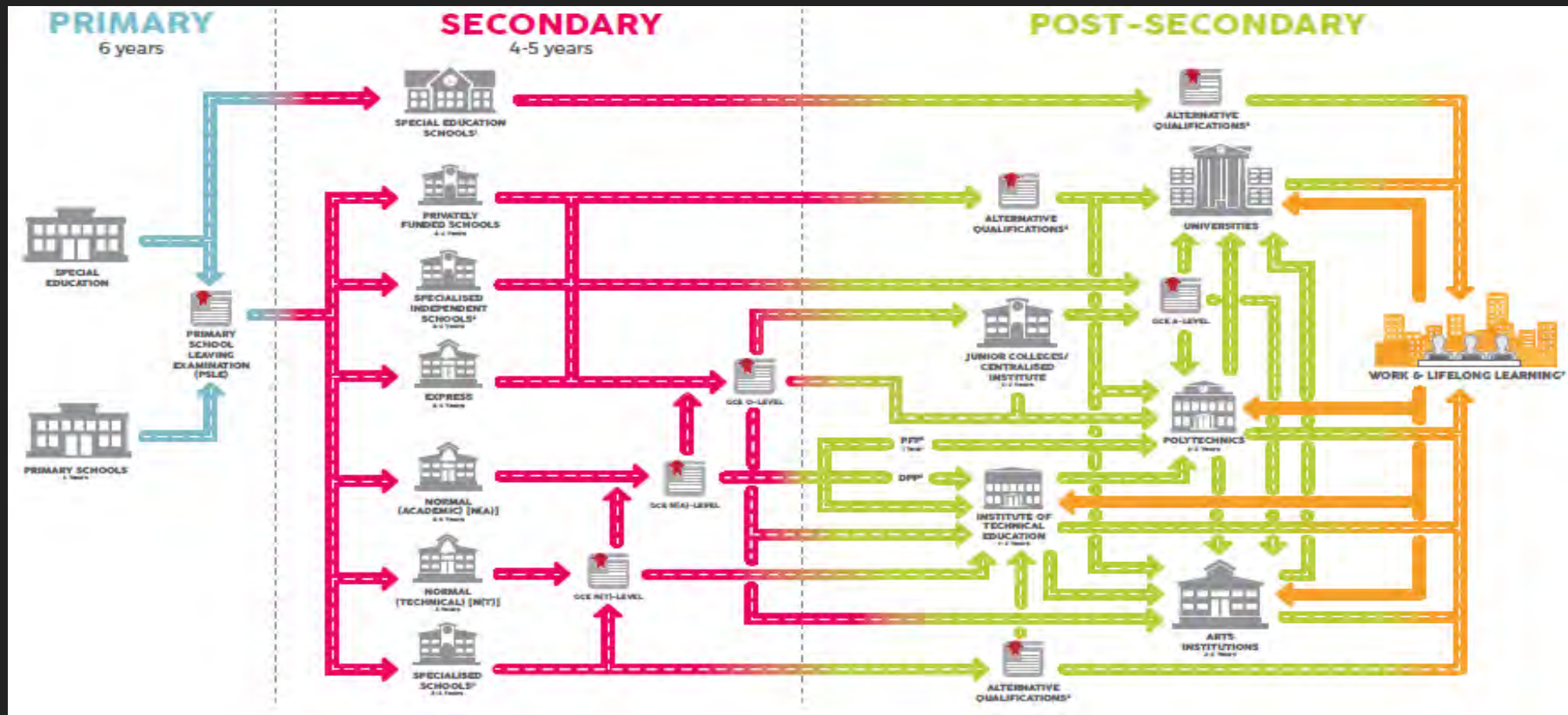
Shorter Polytechnic  
Diplomas for A-Level  
Students

Establishing New  
University of the Arts

“

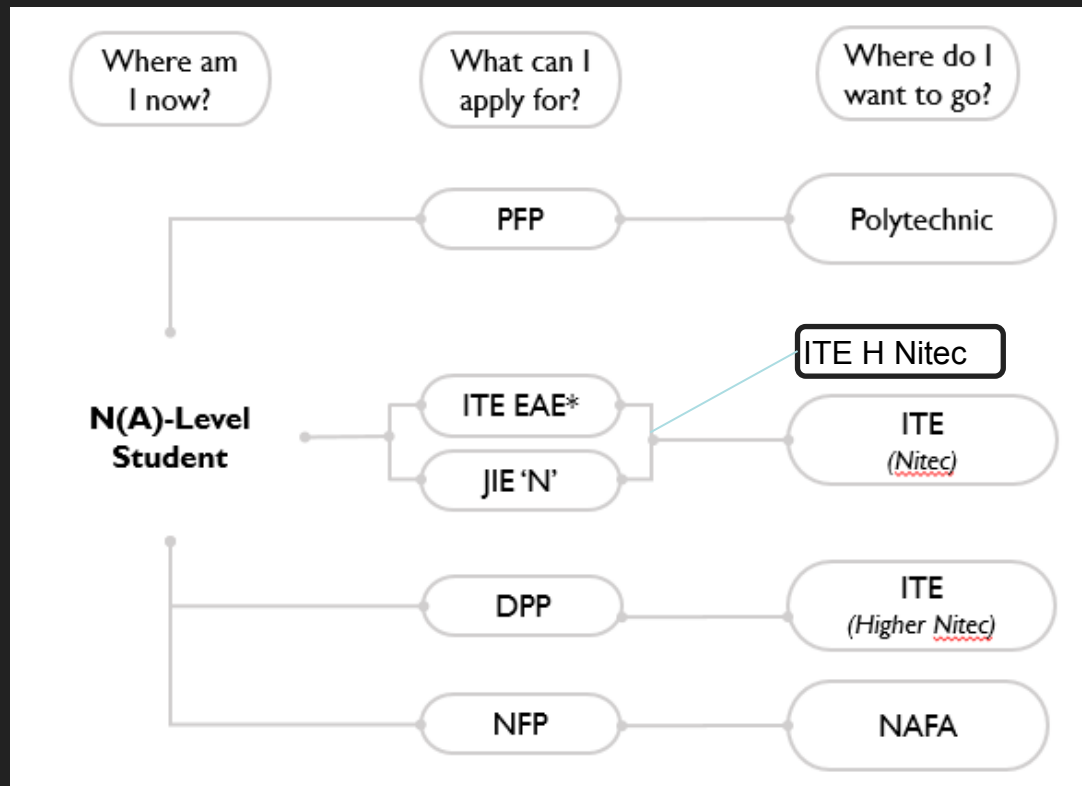
## Post Secondary Pathways

# An Overview of our Education System



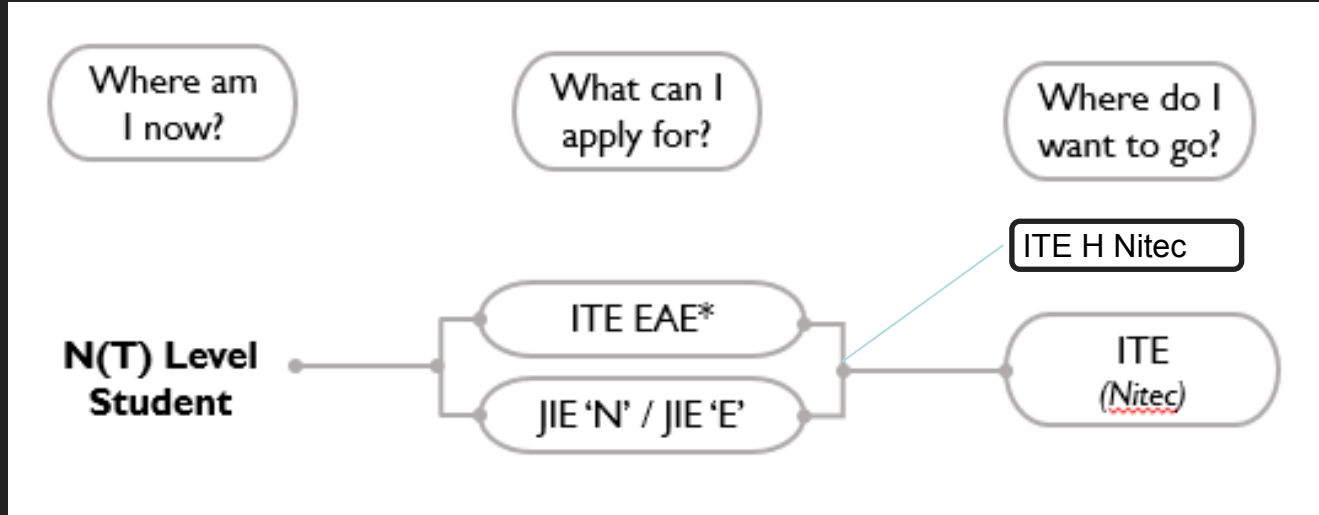
Source: MOE website (2019)

# What's Next after GCE 'N' Levels?





# What's Next after GCE 'N' Levels



# A snapshot of Post-secondary Institutions

Junior Colleges & Millennia Institute		Applied Learning Institutions		
IB Diploma Programme	A Levels	Diploma	Nitec / Higher Nitec	Arts Institutions
<ul style="list-style-type: none"> <li>Focus on equipping students with independent research and writing skills expected at University</li> <li>Prepare students for further education</li> <li>Students obtain IB Diploma</li> <li>Curriculum: Languages, Mathematics, Sciences, Individuals/ Societies, Arts and TOK, EE &amp; CAS</li> </ul>	<ul style="list-style-type: none"> <li>Focus on self-development, critical thinking, intellectual analysis, and communications and interpersonal skills</li> <li>Prepare students for further education</li> <li>Students obtain GCE A-Level certificate</li> <li>Curriculum: Languages, Mathematics and Sciences, Humanities &amp; Arts</li> </ul>	<ul style="list-style-type: none"> <li>Provide hands-on experience within a dynamic and progressive learning environment</li> <li>Prepare students for workforce</li> <li>Students obtain a Diploma certificate</li> <li>Curriculum: Applied learning and industrial attachments</li> </ul>	<ul style="list-style-type: none"> <li>Equip its students with the technical skills and knowledge the workforce needs of various industry sectors</li> <li>Prepare students for workforce</li> <li>Students obtain a Nitec or Higher Nitec certificate</li> <li>Curriculum: Applied learning and industrial attachments</li> </ul>	<ul style="list-style-type: none"> <li>Provide practice-based programmes in the creative arts (design, media, fine arts, performing arts)</li> <li>Prepare students for workforce, in creative industries and beyond</li> <li>Students obtain a Diploma certificate</li> <li>Curriculum: Applied learning and industrial attachments</li> </ul>

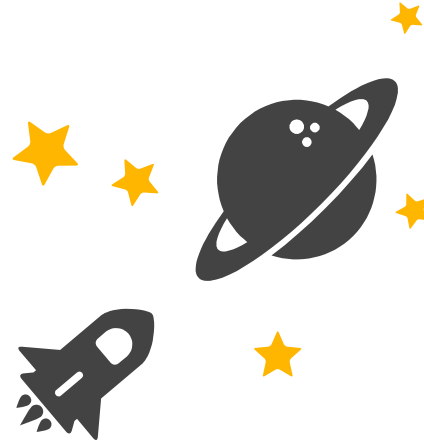
Restricted

“

How to advise our child on ECG  
decision making?

# 3Ps to consider

in decision making



# 1 Personal Factors



# Personal Factors

- **Interest / Passion**
- **Personality**
- **Skills / Strengths**
- **Aptitude**
- **Life's Experiences**
- **Values**
- **Academic Ability**
- **Learning Style**



About

Know Yourself

World of Work

Education Guide

Help

Feedback



Login

# ACCTraordinary

seeing beyond the numbers

ACCTraordinary seeing  
beyond numbers webinar

[Learn More](#)

Organised by:



What's new

Key Events

Resource Links



## Hiring Guide

Find out more about the Hiring Guide [Here](#)



## Internship Guide

Find out more about the Internship Guide [Here](#)



## Leading Employers

Find out more about the Leading Employers [Here](#)

# Personal Factors

## My SkillsFuture Portal

🏠 / Know Yourself

### Know Yourself



#### Find Out More About Yourself

Discover more about your career interests, skills, work values, and learning styles. These tools are meant to facilitate self-awareness and exploration. You may use them as a guide to plan your education or career. Do speak to your parents, teachers and Education and Career Guidance counsellors if you need further advice.

**Career Interests**  
Get Started!

**Skills Confidence**  
Get Started!

**Work Values**  
Get Started!

**Learning Styles**  
Get Started!

#### Which tool should I start with?

Every tool here allows you to discover a different aspect of yourself. It will help to bring you a step closer to finding the educational and career pathway most suited for you.

[Find Out More](#)



# Personal Factors

## MySkillsFuture Portal



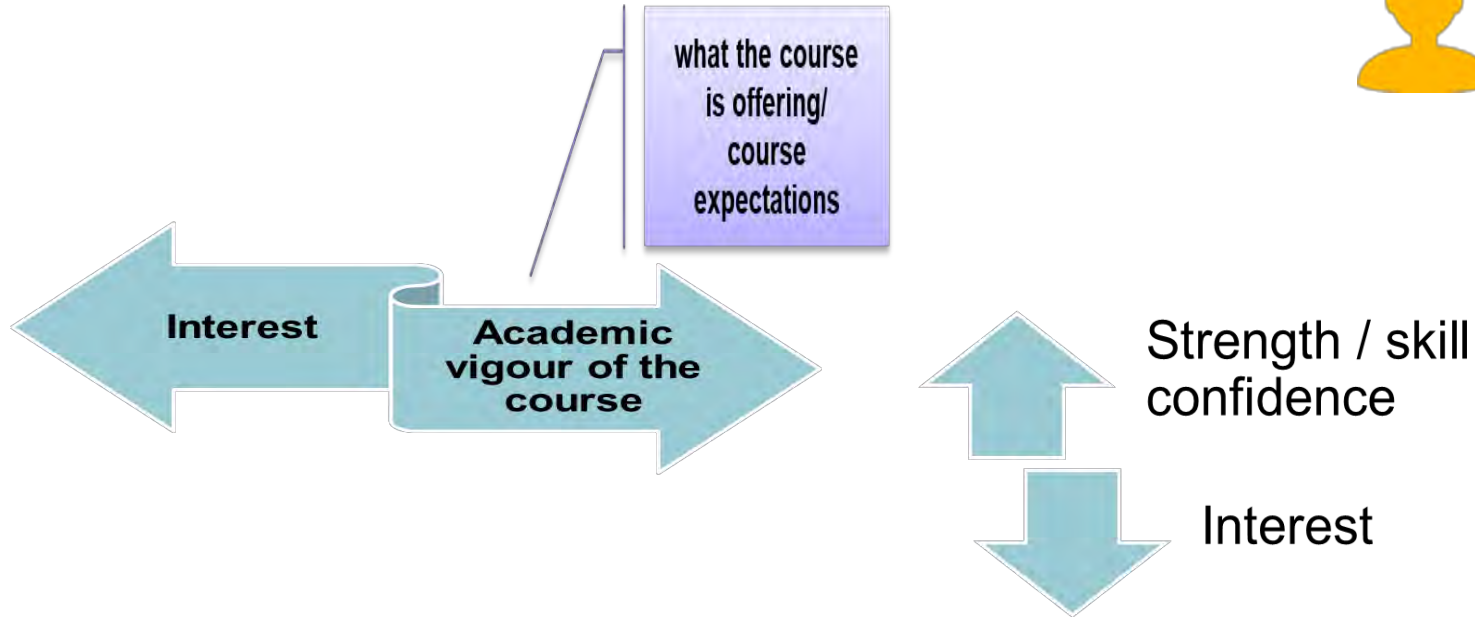
Fill in your Self-Assessment results from *MySkillsFuture* in the boxes below

Your Career Interests	
RIASEC	Score

Your Skills Confidence	
RIASEC	Score

Your Work Values		Your Work Values	
Work Values	Score	Work Values	Score

# Personal Factors



# 1 Personal Factors

## 2 Progression Opportunities



Where do I  
want to go?  
Why?

Where will my  
qualifications  
lead me after  
graduation?

Where am I now?	What can I apply for? When can I apply?	Where do I want to go?
O-Level Student	<ul style="list-style-type: none"> <li>• DSA (May)</li> <li>• JAE (Jan)</li> </ul>	JC / MI 2 or 3 years GCE 'A' Level
	<ul style="list-style-type: none"> <li>• POLY EAE (Jun)</li> <li>• JAE (Jan)</li> </ul>	Polytechnics 3 years Diploma
	<ul style="list-style-type: none"> <li>• ITE EAE (May)</li> <li>• JAE (Jan)</li> <li>• JIE 'O' (Jan)</li> </ul>	ITE 2 years Nitec / Higher Nitec
	<ul style="list-style-type: none"> <li>• Diploma Course <i>Submit application directly to these institutions</i></li> </ul> <p>LASALLE (Oct/Nov) NAFA (Jan)</p>	Arts Institutions 3 years Diploma NAFA / LASALLE



Note: This list is not exhaustive, it only consists of education options that supported by MOE.

<b>JAE – Joint Admissions Exercise</b>  <i>JAE enables GCE O-Level holders to apply for admission to courses offered by JC, MI, Polytechnics and ITE Higher Nitec courses.</i>	<b>JIE ‘O’ – Joint Intake Exercise ‘O’</b>  <i>The JIE ‘O’ is conducted to enable GCE O-Level holders to apply for the two-Year Nitec courses conducted by ITE.</i>	<b>Arts Institutions – NAFA / LASALLE</b>  <i>GCE O-Level holders with the aptitude and interest to pursue the creative arts at the tertiary level may apply for diploma courses.</i>
<b>DSA – Direct School Admission</b>  <i>DSA provides an alternative pathway for talented students to enter ITE directly to the diploma level.</i>	<b>Exercise</b>  <i>ns and on to ITE allows les and thus e</i>	

## What’s the difference between JAE and EAE?

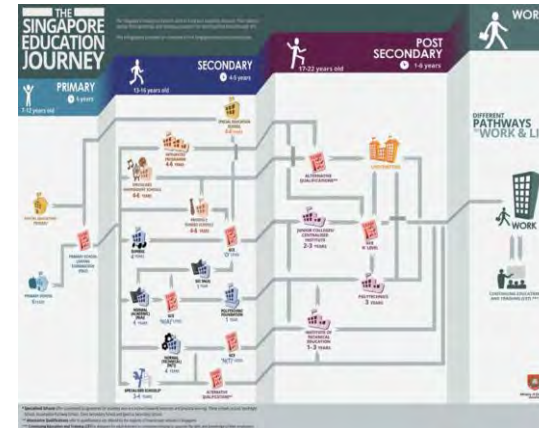
*JAE is solely based on O Level results  
whereas EAE is based on aptitudes and interests.*

*At EAE, graduating O Level students will receive  
conditional offer prior to them sitting for O Level exam & thereafter they  
will not be eligible to apply for JAE.*

# Pathways



- *There are multiple education and career pathways available today. Each one of them cater to different strengths and interests.*
- *Understand that no matter who we are and what our strengths may be, there is a pathway for all of us.*
- *Skills are transferable, so not getting into the course you want is not dead end. Every course has its progression opportunities.*



**1 Personal  
Factors**

**2 Progression  
Opportunities**

**3 Practical  
Factors**



How do I  
get there?

What are the  
entry  
requirements of  
the  
school/course  
I'll be applying  
for?

## Additional Resources



This resource helps to facilitate education decision-making process for students at key educational stages (GCE N-, O- and A- Levels).

Source: [www.moe.gov.sg/microsites/whats-next/](http://www.moe.gov.sg/microsites/whats-next/)





## Additional Resources

This e-book illustrates how 54 individuals who embarked on diverse education and career pathways.

There are many options that cater to the students' needs to help them succeed in their selected paths.

Source: [www.moe.gov.sg/the-next-step-forward](http://www.moe.gov.sg/the-next-step-forward)



## Additional Resources

A Guide for Parents in ECG is a publication intended to support parents with tips and advice on ECG, and considerations at key education stages to guide their children.

Source: [www.moe.gov.sg/ecg-parent-guide](http://www.moe.gov.sg/ecg-parent-guide)



CHIJ Secondary School (Toa Payoh)

## ECG COUNSELLING GUIDANCE

Tue or Thurs  
Via appt (online/f2f)

### WHO IS IT FOR?

Any students who may have the following challenges or just wish to explore further

#### About Me



Hello Girls! I am a former polytechnic lecturer and aviation specialist for more than 2 decades. I am in MOE counselling/guidance work for coming to 6 years.

#### What is ECG ?

A developmental approach to meeting the needs of students at every stage of their education journey, allowing them to be future ready and more prepared for their journey from school to future education or work.

#### 01 Decision making difficulties

- Post secondary pathways
- Career aspirations
- Subject combinations
- EAE/DSA choices

#### 02 Anxiety/Uncertainty for the future

- Lack of self understanding
- Personal challenges
- Family situation

#### 03 Motivational issues

- Loss of confidence
- Self-esteem
- Lack of directions

<https://go.gov.sg/chij-ecg>

Ms Sharon Tay  
ECG Counselling Manager  
tay\_luu\_kian\_sharon@schools.gov.sg



ECG booking link:

Scan QR code

Key in your handphone number

Get OTP from Booking SG system

Select either a Tuesday or Thursday

To choose F2F/virtual zoom or phone call

ECG room (Library)



“The Future belongs to  
those who believe in the  
beauty of their dreams”

-Eleanor Roosevelt



**Free templates for all your presentation needs**



For PowerPoint and  
Google Slides



100% free for  
personal or  
commercial use



Ready to use,  
professional and  
customizable



Blow your audience  
away with attractive  
visuals